



Cable Snake™

Pro +

The cable management system cable snake™ Pro is very stable and is suitable for installation in areas with high-volume transit. The system is compatible with the cable snake Cube™. The high quality design with fine surface erosion and the Easy-Zip system for easy cable entry meets highest standards. It is formed with two compartments to separate power and data and is available in black (RAL9005) and silver (RAL9006).



Model		Art.-Nr.
Extension	black	3300001073
Extension	silver	3300001076
Length 700-1.000 mm		
To be shortened or extended easily		



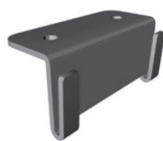
Model	Art.-Nr.
Easy-Cap™ black	3300001333
Easy-Cap™ silver	3300001336
Blind caps for the Easy-Switch splitter	



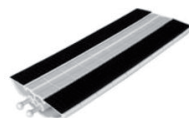
Model	Art.-Nr.
Easy-Fix Pro™ black	3300001243
Easy-Fix Pro™ silver	3300001246
For easy fixation of the cable snake, with two screw holes	



Model	Art.-Nr.
Easy-Floor™ black	3300001283
Easy-Floor™ silver	3300001286
Base plate with four rubber feet for cable snakes Cube and Pro, 110 x 110 mm, cutout 55 x 55 mm	



Model	Art.-Nr.
Easy-Fix-90-S™ black	3300001263
Easy-Fix-90-S™ silver	3300001266
Angle for vertical mounting	



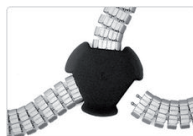
Model	Art.-Nr.
Easy-Tape-HT™	3300001293
High strength hook tape to secure cables snake against slipping on carpet	



Model	Art.-Nr.
Easy-Clip-L™ black	3300001273
For tool-less fixation of cable snake Cube and Pro to floor exits of Ackermann, Stago, etc.	



Model	Art.-Nr.
Easy-Tape-S™	3300001303
In conjunction with the hook strip a very durable attachment to almost any surface is created.	



Model	Art.-Nr.
Easy-Switch™ Pro	3300001323
Tread-proof 4-way splitter for up to three cable snakes Pro or Cube	

Cable Snake™

Premium +

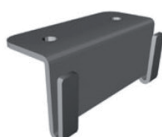
The cable management system Cable-Snake Premium was designed for high-quality office furniture. The slim view side in combination with fine surface erosion emphasizes the high quality design. All accessories are "massive" and solid. The chain links can be pushed together completely into a self-locking elliptical cable channel. It is formed with two compartments to separate power and data and is available in black (RAL9005) and silver (RAL9006).



Model	Art.-Nr.
Cable Snake™ Set black	3300001143
Cable Snake™ Set PREMIUM silv.	3300001146
Length 700-1.000 mm	
To be shortened or extended easily	



Model	Art.-Nr.
Extension black	3300001153
Extension silver	3300001156
Length 300-370 mm	
To be shortened or extended easily	



Model	Art.-Nr.
Easy-Fix-90-S™ black	3300001263
Easy-Fix-90-S™ silver	3300001266
Angle for vertical mounting	



Model	Art.-Nr.
Easy-Switch-Premium™ black	3300001353
Tread-proof 4-way splitter for up to three Cable-Snakes Pro and a vertical Premium	



Model	Art.-Nr.
Easy-Cap™ black	3300001333
Easy-Cap™ silver	3300001336
Blind caps for the Easy-Switch splitter	

Cable Snake



Cube +

Our cable management system cables snake Cube™ is very compact and of high quality. The Cube holds up to 25 cables, allows 2- and 3-dimensional movements and is formed with two compartments to separate power and data for separating data and power lines. The products are available in black (RAL9005) and silver (RAL9006).



Model
Extension black
Extension silver
Length 690-1.000 mm
To be shortened or extended easily

Art.-Nr.
3300001203
3300001206



Model
Easy-Cap™ black
Easy-Cap™ silver
Blind caps for the
Easy-Switch splitter

Art.-Nr.
3300001333
3300001336



Model
Easy-Fix CUBE™ black
Easy-Fix CUBE™ silver
For easy fixation of the
cable snake, with two screw holes

Art.-Nr.
3300001253
3300001256



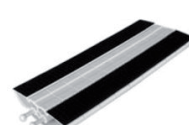
Model
Easy-Floor™ black
Easy-Floor™ silver
Base plate with four rubber
feet for cable snakes Cube and Pro,
110 x 110 mm, cutout 55 x 55 mm

Art.-Nr.
3300001283
3300001286



Model
Easy-Fix-90-S™ black
Easy-Fix-90-S™ silver
Angle for vertical mounting

Art.-Nr.
3300001263
3300001266



Model
Easy-Tape-HT™
High strength hook tape to
secure cables snake against
slipping on carpet

Art.-Nr.
3300001293



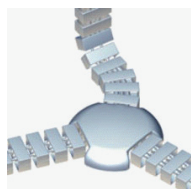
Model
Easy-Clip-L™ black
For tool-less fixation of cable snake
Cube and Pro floor exits of Ackermann,
Stago, etc.

Art.-Nr.
3300



Model
Easy-Tape-S™
In conjunction with the
hook strip a very durable
attachment to almost any
surface is created.

Art.-Nr.
3300001303



Model
Easy-Switch™ CUBE black
Tread-proof 4-way splitter for
up to three cable snakes Pro
or Cube

Art.-Nr.
3300001313



Quadro +

The cables snake Quadro in a unique, square design, has a very good 2- and 3-dimensional flexibility, holds up to 40 cables and is equipped with two compartments to separate power and data. The products are available in black (RAL9005) and silver (RAL9006).



Model
Cable snake set Quadro black
Cable snake set Quadro silver
Length including base plate and table
mounting: appr. 76 cm (23 links)

Art.-Nr.
3300002253
3300002256



Model
Cable snake extension Quadro black
Cable snake extension Quadro silver

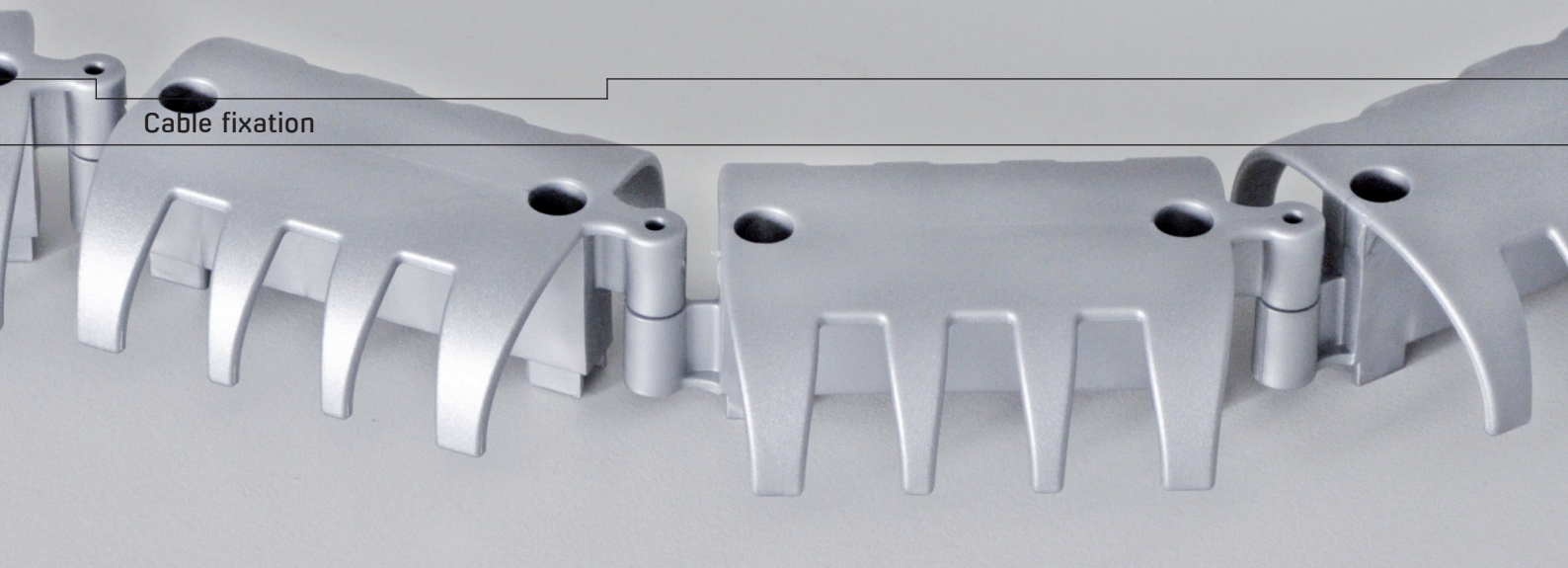
Art.-Nr.
3300002263
3300002266

Length: appr. 100 cm (32 links)



Model
Easy-Fix Quadro black
Easy-Fix Quadro silver
For easy fixation of the cable snake,
with two screw holes

Art.-Nr.
3300002273
3300002276



Cable fixation

Cable fixation

Often, cables are performed in confined space. The concatenation of cable fixation links are a suitable option.

Model
Cable fixation horizontal black
Cable fixation horizontal silver
Minimum order quantity: 10 pieces

Art.-Nr.
3300000803
3300000806



Cable Lock MS

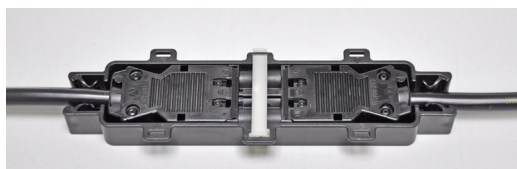
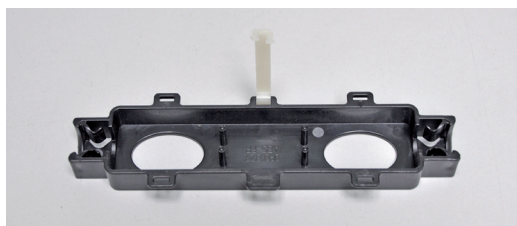


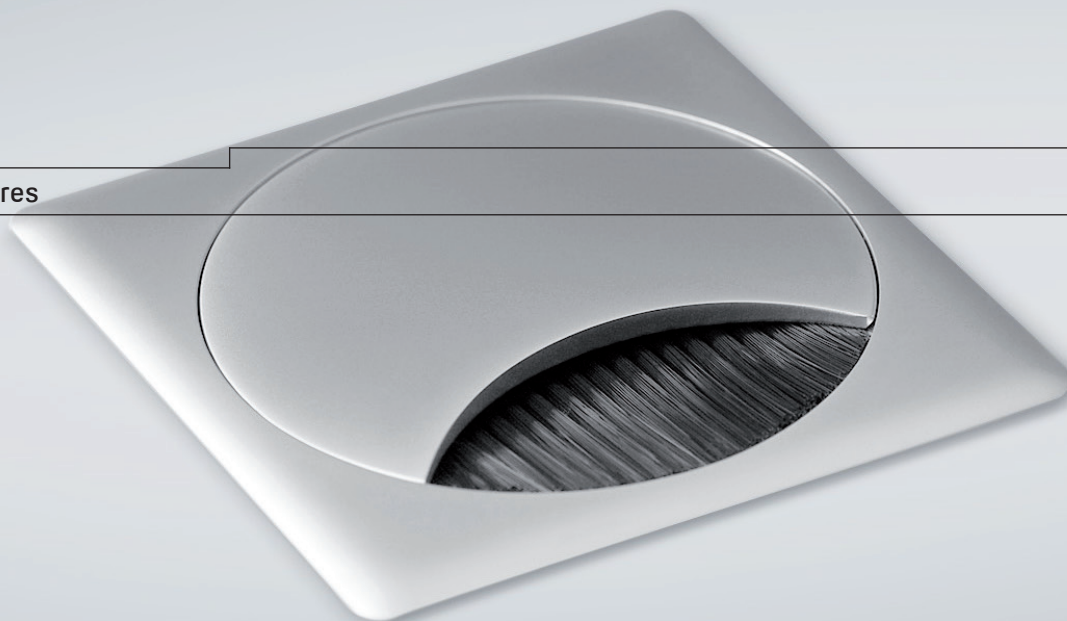
Cable Lock MS

If power cables plugged together, it is imperative to secure the connector against inadvertent release. An effective solution is our Cable-Lock MS, in which not only the longitudinal but also the transverse motion of the cables are intercepted.

Model
CABLE LOCK MS black
10 pieces per set

Art.-Nr.
4307000253





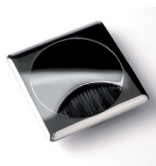
Furniture Accessoires +

Our high-quality cable bushings made of zinc die castings are mounted in a 80 mm diameter mounting hole. The installation depth is only 13 mm. The variants are without cover are used, for example, in the NETBOX Point.

Cable bushing 80 mm

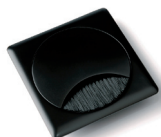
Model
KD 80 mm with cover, Chrom polished

Art.-Nr.
3310008020



KD 80 mm with cover, black

3310008023



KD 80 mm with cover, Chrom dule

3310008026



KD 80 mm with cover, Brushed stainless st. 331000802E



KD 80 mm with cover, Nickel matt

331000802T



Model
KD 80 mm without cover, Chrom polished

Art.-Nr.
3310008010



KD 80 mm without cover, black

3310008013



KD 80 mm without cover, Chrom dule

3310008016



KD 80 mm without cover, Brush. stainless st. 331000801E



KD 80 mm without cover, Nickel matt

331000801T



Furniture Accessoires

Furniture Accessoires

The aluminum cable exit with hinged lid and a black brush seal is also suitable for installation in mobile tables, because the lid is secured by a built-in magnetic mount to prevent unintentional opening.

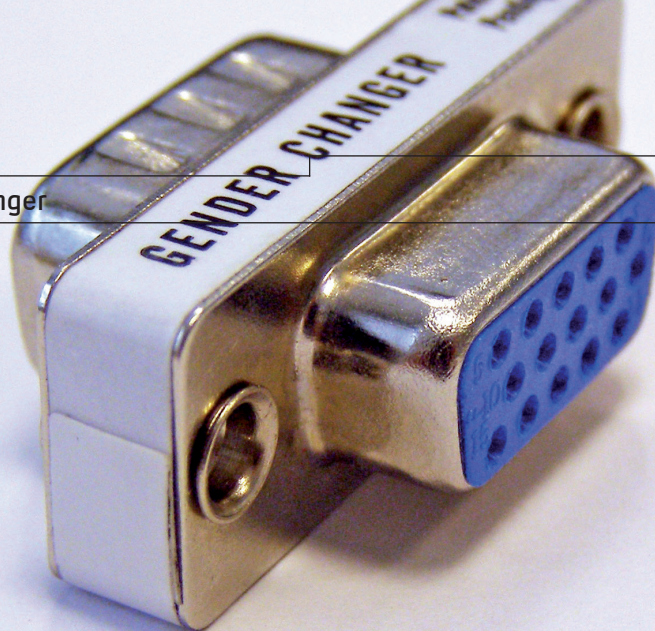
Rectangular cable exit

Model
Outer dimensions:: 280 mm x 120 mm
Depth: 25 mm
Other dimensions on request!

Art.-Nr.
3300002166



Gender Changer



Gender Changer

With our Gender Changers, we offer a wide range of different multimedia and data connectors. The Standard products are designed for easy coupling of two lines, while the Keystone variants are used e.g. in our NETBOX Point.

Standard



Model
VGA SUB-D 15
Socket-Socket

Art.-Nr.
3320000066



Model
VGA SUB-D 15
Plug-Plug

Art.-Nr.
3320000076



Model
DVI 24/5 I
Socket-Socket

Art.-Nr.
3320000083



Model
USB Typ A
Socket-Socket

Art.-Nr.
3320000105

Keystone



Model
RJ45 Cat 6 geschirmt
Socket-Socket KS

Art.-Nr.
420590BJ06



Model
USB Typ A
Socket-Socket KS

Art.-Nr.
420590C500



Model
Audio-Stereoklinken
Socket-Socket KS 3,5 mm

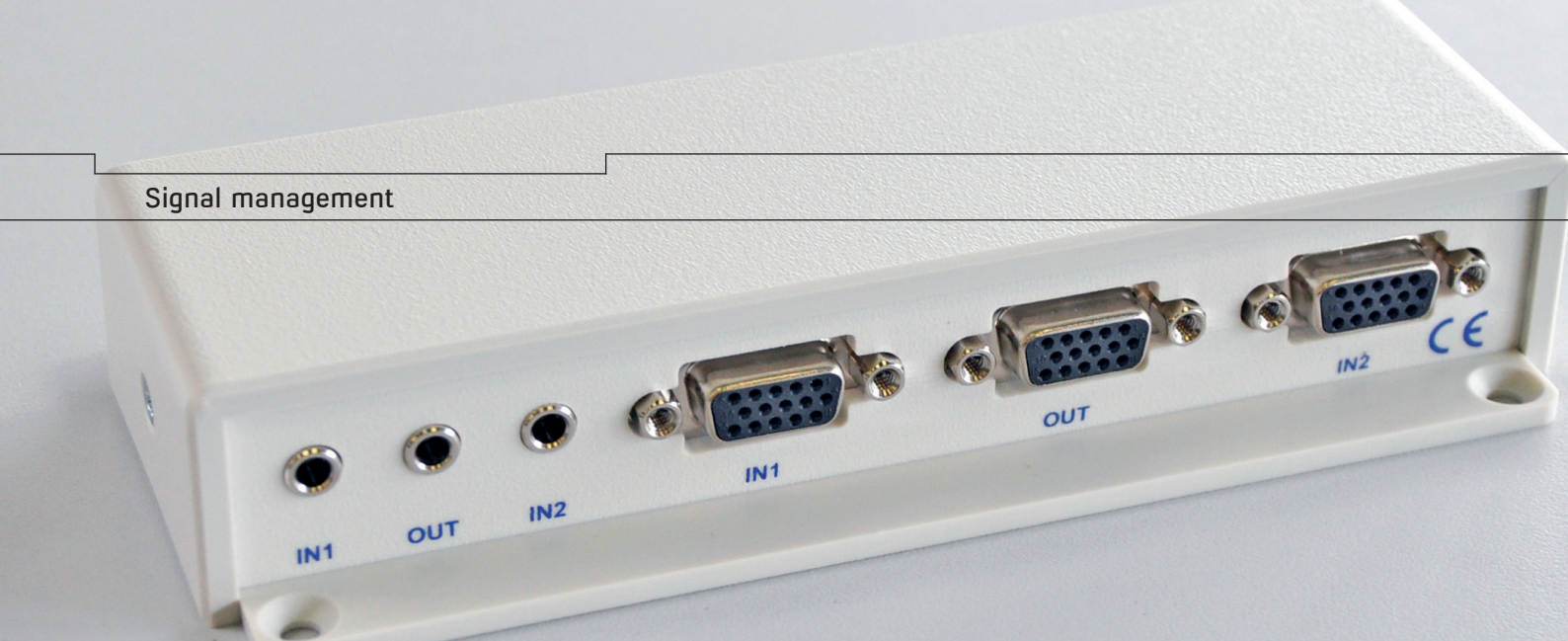
Art.-Nr.
420590BT03



Model
HDMI 1.3
Socket-Socket KS

Art.-Nr.
420590BS03

Signal management



Signal management +

Switch

External data switches to be mounted under the table / to be placed in a cable tray, simple connection via plug and play.

Model
16-Port 10/100 BaseT
8-Port 10/100/1000 BaseT

Art.-Nr.
420590AW03
420590C200



VGA/audio-selectors

External VGA/audio switcher for mounting under the table / for insertion in a cable tray. To connect 2 or 4 laptops to a projector / monitor. Operated by illuminated buttons in our outlet boxes. The connection is done via coded connectors

Model
2-way
4-way

Art.-Nr.
420590AZ00
420590B000

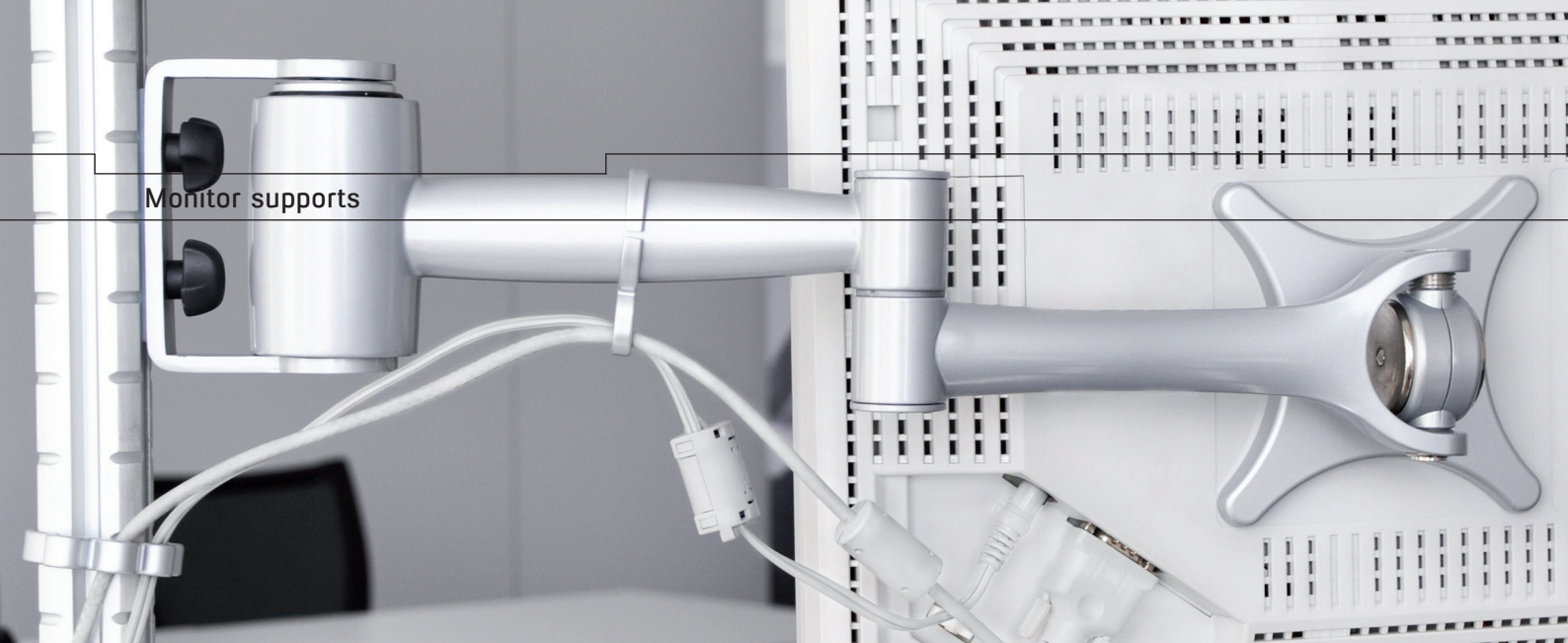


420590AZ00 2-way

I / O VGA: VGA-SUB D females 15pin.
I / O audio: stereo mini jack 3,5 mm Control: mini jack 2,5 mm
Res. max. 1600 x 1200, Bandwith 250 MHz

420590B000 4-way

I / O VGA: VGA-SUB D females 15pin.
I / O audio: stereo RCA connectors
Control: mini jack 2,5 mm
Res. max. 1920 x 1440, Bandwith 350 MHz



Monitor supports +

Our monitor supports are supplied with a 400 mm-column. The max. load is 25 kg. The pivot arms are supplied with a so-called VESA mounting and are thus suitable for mounting on any standard LCD monitor.



Model
Art.-Nr.
3300002196

Monitor support short pivot arm,
with mounting clamp.
Colour: RAL 9006, panel thickness
25-40 mm, incl. 100 mm pivot arm
and cable bracket



Model
Art.-Nr.
3300002216

Monitor support long pivot arm,
with mounting clamp.
Colour: RAL 9006, panel thickness
25-40 mm incl. 400 mm pivot arm
and cable bracket



Accessory for the NETBOX Line



Model
Art.-Nr.
3300002186

Monitor support short pivot arm,
without mounting clamp.
Colour: RAL9006 incl. 100 mm
pivot arm and cable bracket

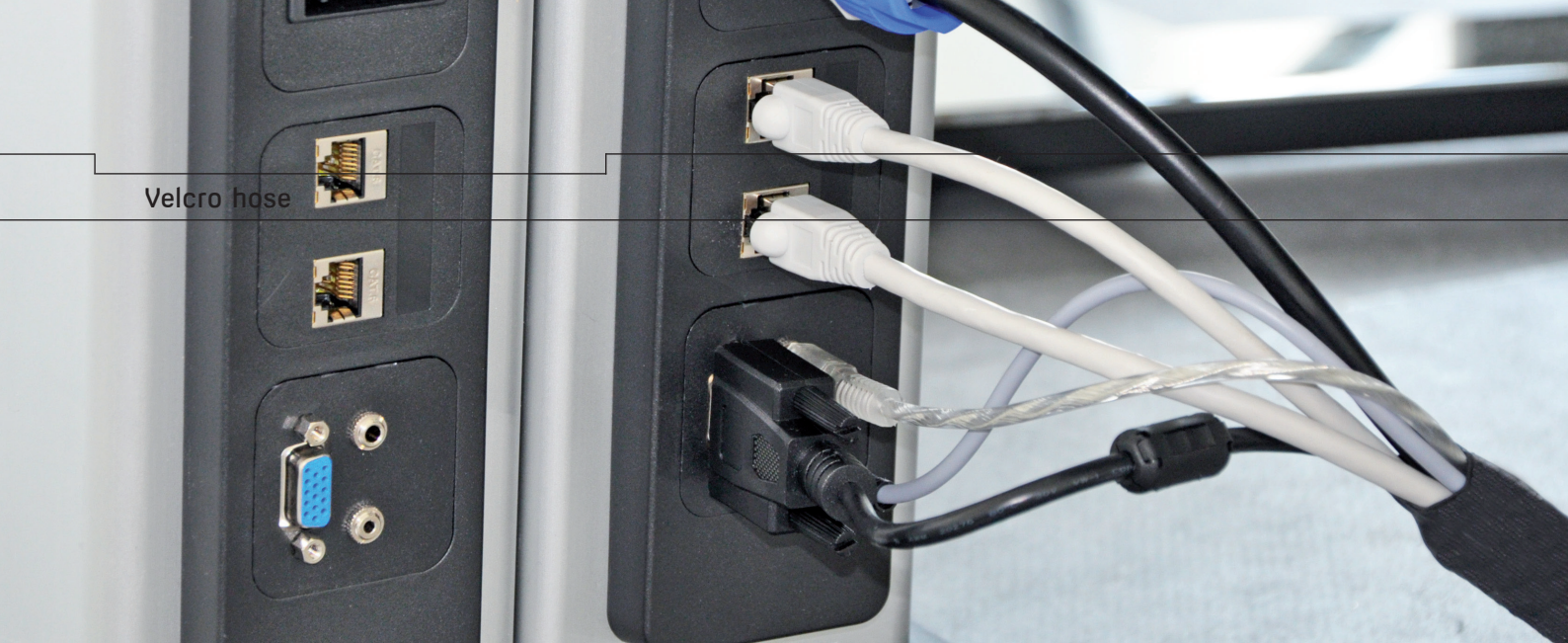


Model
Art.-Nr.
3300002206

Monitor support long pivot arm,
without mounting clamp
Colour: RAL9006, incl. 400 mm
pivot arm and cable bracket



Model
Art.-Nr.
3300001926
Mounting clamp
Colour: RAL9006,
panel thickness 25-40 mm



Velcro hose +

Our fine-meshed, highly flexible Velcro hose is extremely flexible and elastic, so that a fixed seating is provided around the cable bundle. Especially in the field of view unsightly cables are concealed effectively. With the Velcro, it can be installed easily and also the subsequent installation is possible. An alternative is e.g. the cable bundling, in which the cables are laid by means of an insertion tool.

Model		Art.-Nr.
Velcro hose	Ø 15-30 mm	3300001193
Velcro hose	Ø 20-40 mm	3300001183



Model	Art.-Nr.
Cable bundling Ø 20 mm	3300000973



Socket-column Move



Socket-column Move

Our new electric outlet is designed for installation in the kitchen. Three power outlets are available in no time, and are also just as quickly "invisible". Ideal for installation in the unused space of the kitchen countertop.

Model
SCH-K (D/A/NL/N/S/FIN)

Art.-Nr.
7C32000016

BEK (F/B/CZ/SK/PL)

Art.-Nr.
7C32000056



A press on the lid unlocks the column and the unit can be pulled out for use. In final position (above and below) the mobile unit engages with a "click" into place.



- silver lacquered aluminum – surface, socket
- inserts made of black plastic
- including hardwired cable app. 2.000 mm with angle plug (dual grounded)
- intended for installation in kitchen countertops
- countertop thickness up to 50 mm
- Easy installation in Ø 80 mm mounting hole
- Function indicated by red miniature lamp

Central switch



Central switch +

Our central switches are used in the lighting series AL40 and FL28. Due to customized design, the switches can be connected directly to the light, without using an additional interlink cable. Thus, all bands of light can be controlled easily and conveniently.

Model
AL40 GST weiß
Input / output: GST18/3

Art.-Nr.
2100G30001



Model
FL28 GST white
Input / output: GST18/3

Art.-Nr.
2101G30001



Model
Central switch "ZS-2000" white
Series: AL40
Input: Starter lead appr. 1.900 mm
with German angled plug (dual grounded)
Output: GST18/3

Art.-Nr.
2100G31001



Central switch "ZS-2000" white
Series: FL28
Input: Starter lead appr. 1.900 mm
with German angled plug (dual grounded)
Output: GST18/3

Art.-Nr.
2101G31001



Model
Central switch "ZS-Witch" white
Series: AL40
Input / output: GST18/3

Art.-Nr.
2100G33001



Special Feature:
Non-contact switching of the connected lamps by integrated proximity switch from a distance of about 10 cm



Switch box

Switch box

Monitor, computer, power supplies - many devices in the workplace today have no more right off, but also draw unnecessary power when not in use. Our switch boxes can be easily retrofitted to existing electrification, and are an effective means to save energy and reduce costs.

Model	Art.-Nr.
Switch box	2S00G14003
Input:	Starter lead appr. 1.900 mm with German angled plug (dual grounded)
Output:	Interlink lead, appr. 400 mm with GST18/3-female
Switch:	2-pol. Green illuminated, max. 16 amps (3680 watts)



Model	Art.-Nr.
Switch box	2S00G05003
Input:	Interlink cable appr. 1.400 mm with GST18/3-male
Output:	Interlink cable appr. 1.400 mm with GST18/3-female
Switch:	2-pol. Green illuminated, max. 16 amps (3680 watts)

Other cables and lenght on request!

Duplex hinge

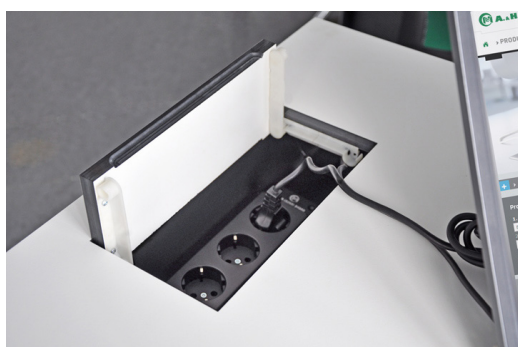


Duplex hinge

In high-quality tables often a technique flap is desired, that has to match the surface of the table. With the duplex hinge, we offer you the opportunity to realize a technique flap with access from both sides. Both opening directions also feature an integrated brake function, so that an uncontrolled shut of the flap is avoided.

Model
Consisting of two upper and
two lower parts including brakes fitted

Art.-Nr.
4307000260



A. & H. Meyer



A. & H. Meyer

Mit ihrer fast 30-jährigen Erfahrung im Elektrifizierungsbereich ist die A. & H. Meyer GmbH mit Hauptsitz in Dörentrup/Ostwestfalen-Lippe Marktführer und Trendsetter für maßgeschneiderte Elektrifizierungs- und Kabelmanagement-Systeme im Office-Bereich. Aber auch bei Möbeln und Einrichtungskonzepten für Hotels, öffentliche Gebäude und Stores wird die sichere Steckverbindungstechnik des Unternehmens zunehmend eingesetzt. A. & H. Meyer zeichnet sich durch führendes Elektrifizierungs-Know-how, eines der größten Portfolios an eleganten Steckdosenleisten und Datenanschlüssen sowie einem internationalen Vertriebsnetz aus.

With almost 30 years of experience in electrical cable management systems, A. & H. Meyer GmbH, headquartered in Dörentrup/Eastern Westphalia-Lippe in Germany, is a market leader in customiz-able cable management systems particularly for the office sector. A core feature of its normal furniture and furnishing projects for hotels, public buildings and stores is a safe and seamless "plug and play" technology. A. & H. Meyer is a manufacturer of one of the largest ranges of modules and data connectors marketed through an international sales network, a testament to our leading-edge technical expertise and far-sighted business strategy.



A. & H. Meyer GmbH
Leuchten und Büroelektrik
Fermke 8
32694 Dörentrup
Germany

T + 49 5265 9488-0
F + 49 5265 9488-11
www.ah-meyer.de

A. & H. Meyer Sdn. Bhd.
3, Jalan Astaka U8/84
Section U8, Bukit Jelutong
40150 Shah Alam
Malaysia

T + 60 3 7845 7277
F + 60 3 7845 2155
www.ah-meyer.com.my